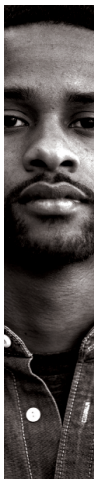


LONGY SCHOOL OF MUSIC PRESENTS

# Gender-Benders & Trend- Disruptors; Jaaaß!!

Friday, December 8, 2023 | 8:00 pm  
Recital Room N-1



# It's

LONGY SEASON  
23-24

# Personal

**I'M AN ORDINARY MAN**

from *My Fair Lady*

Frederick Loewe (1901-1988)

Kelsey Moisan, soprano

Ying Lin, piano

**IF NO ONE EVER MARRIES ME**

Liza Lehmann (1862-1918)

Riuji Sato, countertenor

Kevin Lubin, piano

**LADIES WHO LUNCH**

from *Company*

Stephen Sondheim (1930-2021)

David Smith, countertenor

Ying Lin, piano

**WENN ICH IN DEINE AUGEN SEH'**

from *Dichterliebe, Op. 48*

Robert Schumann (1810-1856)

Shailagh Maher, soprano

Johnny Elliott, piano

**SEIT ICH IHN GESEHEN**

from *Frauenliebe und Leben, Op. 42*

Robert Schumann (1810-1856)

William Aldenberg, tenor

Johnny Elliott, piano

**DAS VEILCHEN, K. 476**

Wolfgang Amadeus Mozart (1756-1792)

Harry Otero-Rivera, baritone

Johnny Elliott, piano

**JOHANNA**

from *Sweeney Todd: The Demon Barber of Fleet Street*

Stephen Sondheim (1930-2021)

Anna Simmons, soprano

Johnny Elliott, piano

**MON COEUR S'OUVRE À TA VOIX**

from *Samson et Dalilla*

Camille Saint-Saëns (1835-1921)

Riuji Sato, countertenor

Tim Antonelli, piano

**TAYLOR THE LATTE BOY**

Zina Goldrich (b. 1964)

William Aldenberg, tenor

Kevin Lubin, piano

**GUESS WHO I SAW TODAY**

Murray Grand (1919-2007)

Harry Otero-Rivera, baritone

Johnny Elliott, piano

**THERE ARE FAIRIES AT THE BOTTOM OF OUR GARDEN**

Liza Lehmann (1862-1918)

Kevin Lubin, voice

Johnny Elliott, piano

**SEASIDE RENDEZVOUS**

Queen

Ruby Abreu, mezzo-soprano

Johnny Elliott, piano

Kevin Lubin, toy piano, kazoo



LONGY.EDU/ITS-PERSONAL

Longy is committed to making music available to the broadest audience, offering over 200 concerts each year free and open to the public. Text LONGY to 44-321 to support Longy today!