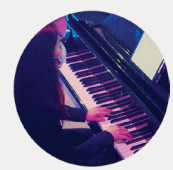


(SOME ASSEMBLY REQUIRED)

begin

LONGY
22/23
SEASON



anywhere

GRADUATING STUDENT RECITAL

An Art That Softens a Troubled Mind

Wednesday, May 24, 2023 | 3:00 pm
Edward M. Pickman Hall

Olusegun Soyemi, countertenor

Ambrose Philipek, baroque violin
Sarah Kiel, baroque violin
Guinevere Conner, viola da gamba
Vivian Montgomery, harpsichord &
organ

This recital is in partial fulfillment of the
Graduate Performance Diploma.
Olusegun Soyemi is a student of Anne
Azema.

Longy is committed to making music
available to the broadest audience, offering
over 200 concerts each year free and open
to the public. Text LONGY to 44-321 to
support Longy today!



LONGY
School of Music of Bard College

AKIN EUBA (1935-2020)

Ore Meta (1981)

Omo J'owo (1981)

JUWON OGUNBE (b. 1961)

Otito inu (2008)

HENRY PURCELL (1659-1695)

Ah how sweet it is to love (Z.613)
from *Tyrannic love* (1694)

THOMAS CAMPION (1567-1620)

If thou long'st so much to learn
(1617)

GEORGE FRIDERIC HANDEL (1685-
1759)

Ho fugitto Amore (HWV 118)

JOHN DOWLAND (1562-1626)

Lady if you so spite me, from
Musical Banquet (1610)

G. F. HANDEL

The smiling hours of joyful train,
from *Hercules* HWV 60 (1787)

INTERMISSION

GUIRAUT RIQUIER (1230-1292)

Jhesu Crist (1275)

DIETERICH BUXTEHUDE
(1637-1707)

Jubilate Domino (BuxWV64)
(1690)

HENRY PURCELL

The Evening Hymn (Z.193) from
Harmonia Sacra (1688)

JOHANN SEBASTIAN BACH
(1685-1750)

**Schlage doch, Gewunschte
Stunde**, BWV 53 (1723/1724)

ANTONIO VIVALDI (1678-1741)

Amen, from *Nisi Dominus* RV 608
(1713 -1717)