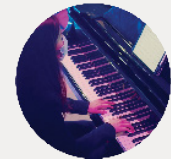


(SOME ASSEMBLY REQUIRED)

begin

LONGY  
22/23  
SEASON



anywhere

GRADUATING STUDENT RECITAL

# Belong to a Soul

Friday, May 5, 2023 | 3:00 pm  
Edward M. Pickman Hall

## Shea Brown, soprano

Vivian Montgomery, harpsichord |  
fortepiano  
Guinevere Conner, viola da gamba |  
baroque bass  
Bek Zehr, mezzo-soprano | guitar |  
piano  
Angie Tyler, soprano  
Regina Stroncek, soprano  
Cannon McClure, mezzo-soprano  
Sophie Berman, soprano  
Dagny von Mering, mezzo-soprano  
Pamela Dellal, hurdy-gurdy

HILDEGARD VON BINGEN (1098-1179)  
Quia ergo femina  
O magnum miraculum

LUZZASCO LUZZASCHI (1545-1607)  
Aura soave (1585)

BARBARA STROZZI (1619-1677)  
L'amante segreto (1651)

LUZZASCO LUZZASCHI  
Occhi del pianto (1585)

CLAUDIO MONTEVERDI (1567-1643)  
Zefiro torna (1632)

LUZZASCO LUZZASCHI  
O dolcezze amarissime (1585)

CLAUDIO MONTEVERDI  
BENEDETTO FERRARI (1603-1681)  
Pur ti miro, from *L'incoronazione di Poppea* (1642)

## INTERMISSION

GIOVANNI BOTTESINI (1821-1889)  
Two Songs for Soprano, Double Bass, and Piano (1850)  
I. Une bouche aimée  
II. Tutto il mondo

BRANDI CARLILE (B. 1981)  
The Joke (2018)

MAREN MORRIS (B. 1990)  
Better Than We Found It (2020)

ANI DIFRANCO (B. 1970)  
On Every Corner (1991)

MICHAEL MCGLYNN (B. 1964)  
Jerusalem (1993)

AURORA (B. 1996)  
Infections of a Different Kind (2018)

This recital is in partial fulfillment of the Master of Music degree. Shea is a student of Carol Mastrodomenico, Pamela Dellal, and Anne Azéma.

Longy is committed to making music available to the broadest audience, offering over 200 concerts each year free and open to the public. Text LONGY to 44-321 to support Longy today!

