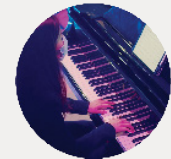


(SOME ASSEMBLY REQUIRED)

begin

LONGY
22/23
SEASON



anywhere

FACULTY DEBUT RECITAL

The Electric Harpsichord

Thursday, December 15, 2022 | 8:00 pm
Edward M. Pickman Hall

Daniel Walden, harpsichord &
piano

SARAH NEMTSOV (B. 1980)
Brief Stimmung, for harpsichord

JULIO ESTRADA (B. 1943)
Canto tejido, for piano

GRACIELA PARASKEVAIDIS (B. 1940)
Réplica, for harpsichord

JULIO ZÚÑIGA (B. 1987)
New Piece, for piano and electronics

GRACIELA PARASKEVAIDIS (B. 1940)
en abril, for piano

PABLO SANTIAGO CHIN (B. 1982)
Ocho por clavecín digital, for harpsichord
and virtual harpsichord

JULIO ESTRADA (B. 1943)
Yuunohui' Tlapoa

Longy is committed to making music
available to the broadest audience, offering
over 200 concerts each year free and open
to the public. Text LONGY to 44-321 to
support Longy today!



LONGY
School of Music of Bard College