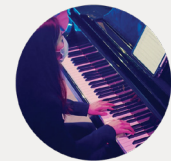


(SOME ASSEMBLY REQUIRED)

begin

LONGY
22/23
SEASON



anywhere

ENSEMBLE-IN-RESIDENCE

Trailblazers

Thursday, November 3, 2022 | 8:00 pm
Edward M. Pickman Hall

Radius Ensemble

Jennifer Montbach, oboe
Sarah Bob, piano
Miriam Bolkosky, cello
Sarah Brady, flute
Gabriela Diaz, violin
Eran Egozy, clarinet
Noriko Futagami, viola
Anne Howarth, horn
Adrian Morejon, bassoon

CLAUDE DEBUSSY (1862-1918)
Piano Trio in G Major (1880)
I. Andantino con moto allegro
II. Scherzo: Moderato con
allegro
III. Andante espressivo
IV. Finale: Appassionato

CHARLES SHADLE
Chahta Aiasha (Choctaw Places),
for oboe and strings
*World premiere

JUDITH WEIR (B. 1954)
Wake Your Wild Voice (2008), for
bassoon and cello

ERIC EWAZEN (B. 1954)
Roaring Fork, for wind quintet
I. Whitewater Rapids (Maroon
Creek)
II. Columbines (Snowmass Lake)
III. At the Summit (Buckskin
Pass)

Trailblazers is a program at the crossroads of nature and culture, freedom and restraint. The concert highlights National Native American Heritage Month with the world premiere of Boston-based composer, and member of the Choctaw tribe, Charles Shadle's Chahta Aiasha (Choctaw Places) for oboe (doubling English horn) and strings. The program opens with Claude Debussy's early Piano Trio in G Major, which foreshadows his later explorations. Next comes Judith Weir's Wake Your Wild Voice (2008) for bassoon and cello, featuring the bassoonist as the unlikely virtuoso, "awakening... a wilder, more passionate voice than the instrument is often allowed." Finally, Eric Ewazen's pastoral Roaring Fork for wind quintet extends the theme of natural spaces, celebrating the Roaring Fork River valley's spectacular scenery with bubbly textures and crystal clear harmonies.

Longy is committed to making music available to the broadest audience, offering over 200 concerts each year free and open to the public. Text LONGY to 44-321 to support Longy today!



longy.edu/events

LONGY
School of Music of Bard College