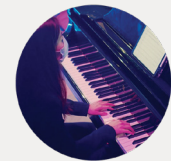


(SOME ASSEMBLY REQUIRED)

begin

LONGY  
22/23  
SEASON



anywhere

CLASS PERFORMANCE

# Begin Anywhere. Begin Everywhere.

Saturday, October 22, 2022 | 8:00 pm  
Edward M. Pickman Hall

## Orchestra FLEX

Roger Kalia, guest conductor  
Andy Kozar, instructor

VIOLIN: Mariagrazia Archila Pacheco, Filippo Bagarella, Gvantsa Butskhrikidze+^, Chu Chu, Julie Di Leece, Scarlot Falcon Diaz, Jing Hu, Li-Chen Huang\*^, Sarah Kiel, Tang Lifeng, Yue Pan, Katerina Rancano~+, Xuhong Yang, Mary Zantzing, Yiwei Zhu

VIOLA: Julian Matthew Bernal\*+^, Xiaoyu Xu  
CELLO: Yitian Huang, Ana Ospina+, Rosalyn Taylor\*^, Tong Wu, Tiangcheng Zeng

BASS: Javier Avendano

FLUTE: Maria Bustos, Chih-Yu Cheng, Thomas Conrad, Hannah Grace Anderson, Joy Ko, Maria Milano, Calista Richlen, Yuqi Sheng, Kristine Terranova

OBOE: Orlando Salazar Reyes

CLARINET: Logan Howe, Lorenzo Macuja (grad. M.M. '22)

BASSOON: Brenda Herrar, Elizabeth Knight  
HORN: Joe Borgia (grad. U.D. '21), Walter Brand  
SAXOPHONE: Haozhen Sun

TRUMPET: Mark Perez, Rolph Pierre, Quadrat Wasefi

TROMBONE: Autumn Istre, William Lang, Diego Galiano del Toro

TUBA: Kyle Wendling

PERCUSSION: Jenna Driscoll, Sam LaGrego

PIANO: Ying Lin, Nicoleta Savvidou

VOCALISTS: Sophie Berman, Mingmin Fan, Ruijing Guo, Monica Lopez\*, Danyi Ma, Eliana Osorio Saldarriaga, Isabel Randall

COMPOSERS/ARRANGERS: Janet Lagah-Bona, Yuying Lu, Tianyi Zhang

\* = denotes principal players on Prelude and Fugue; The Planets

+ = denotes principal players on Ascending Bird

^ = denotes principal players on O Maria

~ = denotes principle players on The Creation

Longy is committed to making music available to the broadest audience, offering over 200 concerts each year free and open to the public. Text LONGY to 44-321 to support Longy today!



longy.edu/events

**LONGY**  
School of Music of Bard College

CHEN YI (B. 1970)  
Prelude, from Prelude and Fugue (2009)

GUSTAV HOLST (1874-1934)  
ARR. GEORGE MORTON  
The Planets, Op. 32 (1916)  
IV. Jupiter  
VII. Neptune

PETER GILBERT (B. 1975)  
Tsukimi (2013)  
I. [#7] Ama no hara  
II. [#79] Akikaze ni  
III. [#23] Tsuki mireba  
V. [#76] Wata no hara  
VII. [#81] Hototogisu  
VIII. [#36] Natsu no yo wa  
ANDY KOZAR, CONDUCTOR

HECTOR VILLA LOBOS (1887-1959)  
Chôros, No. 7 (1924)  
ANDY KOZAR, CONDUCTOR

SILVESTRE REVUELTAS (1899-1940)  
Homenaje a Federico Garcia Lorca (1936)  
I. Baile (Dance)  
II. Duelo (Sorrow)

-INTERMISSION-

SIAMA AGHAEI (B. 1973)  
COLIN JACOBSEN (B. 1978)  
Ascending Bird (2011)

TREVOR WESTON (B. 1967)  
O Maria (2015)  
KYLE WENDLING (M.M. TUBA PERFORMANCE), CONDUCTOR  
ISABEL RANDALL, MEZZO-SOPRANO

JOSEPH HAYDN (1732-1809)  
The Creation (1798)  
I. Introduction--Representation of Chaos

II. In the Beginning  
RAPHAEL: ISABEL RANDALL, MEZZO-SOPRANO  
URIEL: SOPHIE BERMAN, SOPRANO

XIX. The Most Beautiful Appear  
GABRIEL: MONICA LOPEZ, SOPRANO  
URIEL: RUIJING GUO, SOPRANO  
RAPHAEL: ISABEL RANDALL, MEZZO-SOPRANO

XXVII. Achieved is the Glorious Work

XXVII-A. Each Living Soul Awaits

XXXI. Graceful Consort  
ADAM: SOPHIE BERMAN, SOPRANO  
EVE: DANYI MA, SOPRANO

XXVII-B. Second Chorus Achieved is the Glorious Work  
GABRIEL: MINGMIN FAN, SOPRANO  
URIEL: ELIANA OSORIO SALDARRIAGA, SOPRANO  
RAPHAEL: ISABEL RANDALL, MEZZO-SOPRANO