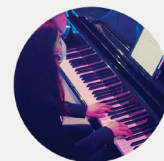


(SOME ASSEMBLY REQUIRED)

begin

LONGY  
22/23  
SEASON



anywhere

FACULTY ARTIST RECITAL

# Humanity Across Time and Space

Monday, October 3, 2022 | 8:00 pm  
Edward M. Pickman Hall

Renana Gutman, piano

JOHANN SEBASTIAN BACH (1685-1750)  
**French Suite No.2 in C minor, BWV 813**

- I. Allemande
- II. Courante
- III. Sarabande
- IV. Air
- V. Minuet I
- VI. Minuet 2
- VII. Gigue

CLAUDE DEBUSSY (1862-1918)  
**“Pagodes” from “Estamps” (“Prints”)**

**“La plus que lente” (“the more than  
slow”)**

GABRIEL FAURÉ (1845-1924)  
**Nocturne No.2 in B major, Op.33, No.2**

FRÉDÉRIC CHOPIN (1810-1849)  
**Barcarolle Op.60 in F-sharp major**

-INTERMISSION-

ERWIN SCHULHOFF (1894-1942)  
**from “5 Études de Jazz” (5 Jazz études)**

1. Charleston
2. Blues
3. Chanson
4. Tango
5. Toccata sur le shimmy “Kitten  
on the Keys” de Zez Confrey

CLAUDE DEBUSSY (1862-1918)  
**“Reflets dans l’eau” (“reflection in the  
water”) from Images, book I  
Hommage à Rameau**

FRÉDÉRIC CHOPIN (1810-1849)  
**Polonaise-fantaisie Op.61 in A-flat**

Longy is committed to making music  
available to the broadest audience, offering  
over 200 concerts each year free and open  
to the public. Text LONGY to 44-321 to  
support Longy today!

