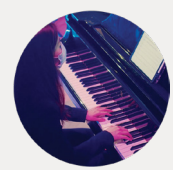


(SOME ASSEMBLY REQUIRED)

begin

LONGY
22/23
SEASON



anywhere

FACULTY ARTIST RECITAL

Songs of Lament, Songs of Hope

Thursday, October 6, 2022 | 8 pm
Edward M. Pickman Hall

Wayman Chin, piano

JOHANN SEBASTIAN BACH (1685-1750)
Duetto No. 1 in E Minor, BWV 802

WOLFGANG AMADEUS MOZART (1756-1791)
Adagio in B Minor, K. 540

FRANZ SCHUBERT (1797-1828)
Sonata in D Major, Op. 53, D 850 "Gasteiner" (1825)
Allegro
Con moto
Scherzo: Allegro vivace
Rondo: Allegro moderato

BRIEF PAUSE

ROBERT SCHUMANN (1810-1856)
Kinderszenen, op. 15 (1839)
1. Von fremden Ländern und Menschen (From Foreign Lands and People)
2. Kuriose Geschichte (Curious Story)
3. Hasche-Mann (Blindman's Bluff)
4. Bittendes Kind (Pleading Child)
5. Glückes genug (Perfect Happiness)
6. Wichtige Begebenheit (Great Adventure)
7. Träumerei (Reverie)
8. Am Kamin (By the Fireside)
9. Ritter vom Steckenpferd (On the Rocking Horse)
10. Fast zu ernst (Almost too Serious)
11. Fürchtenmachen (Hobgoblin)
12. Kind im Einschlummern (Child Falling Asleep)
13. Der Dichter spricht (The Poet Speaks)

Longy is committed to making music available to the broadest audience, offering over 200 concerts each year free and open to the public. Text LONGY to 44-321 to support Longy today!



longy.edu/events

LONGY
School of Music of Bard College